

ANGLICARE
NSW SOUTH, NSW WEST & ACT



THRIVE

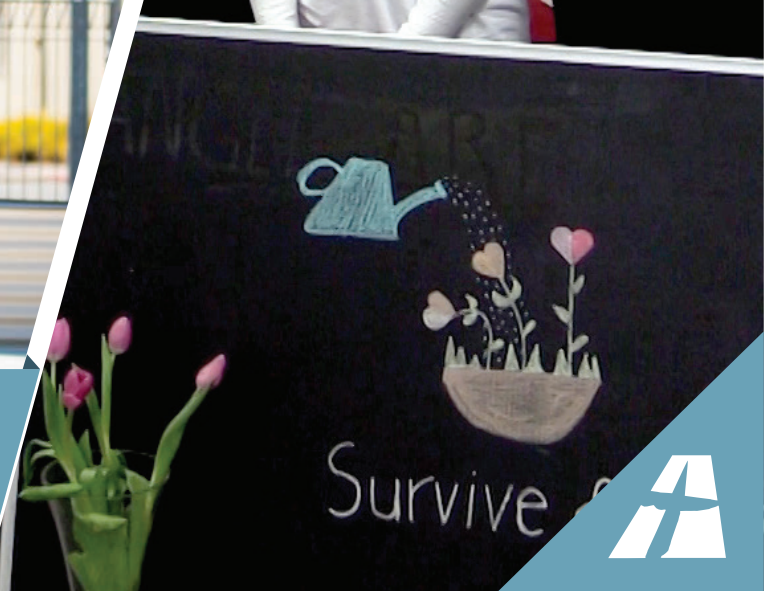
YEAR IN REVIEW
SPRING 2015

THANK YOU



**INSIDE
THIS
ISSUE**

**YOUR GENEROSITY MAKES A DIFFERENCE
ANGLICARE'S NEW STRATEGIC PLAN
ORANGE OFFICE TO OFFER MORE SERVICES
FOOD FAIR SUPPORTS THE QUEANBEYAN COMMUNITY**





FOLLOW US ON:



www.facebook.com/AnglicareACT
www.twitter.com/AnglicareACT

CONTENTS

- 02. CEO'S MESSAGE
- 03. HOW YOUR DONATIONS HAVE HELPED
- 04. HELP AT HAND IN ORANGE
- 05. LAUNCH OF FOOD FAIR
- 06 SPOTLIGHT
- 07. ANGLICARE'S NEW STRATEGIC PLAN
- 08. CHURCHES AND COMMUNITY

CONTACT US

ANGLICARE CENTRAL OFFICE

Level 5, 221 London Circuit,
Canberra, ACT 2600
Phone: (02) 6245 7101
Email: reception@anglicare.com.au
www.anglicare.com.au

Update your Details

Have you moved recently? Don't forget to email donations@anglicare.com.au or call 1800 18 77 68 so you can keep receiving THRIVE.

Unsubscribe

Want to unsubscribe? We're sad to see you go and we'd love to hear any feedback you could provide. Email your unsubscribe request to donations@anglicare.com.au or call us on 1800 18 77 68.

Privacy Policy

Anglicare remains strongly committed to ensuring the privacy of both the people we serve and those that we come into contact with. Our privacy policy is outlined on our website: www.anglicare.com.au

CEO'S MESSAGE

In this edition of Thrive we provide supporters with our Year in Review. We want to update you about the projects you supported and how your generosity makes a positive difference in the lives of many vulnerable people in our communities.

Our achievements would be impossible without the extraordinary open heartedness of people like you. The wonderful success of our recent Pantry Appeal is just one example. We set a target of 40,000 grocery items to meet the growing demand for food hampers over winter in Canberra and surrounding towns. Thanks to the unbelievable response from local churches, schools and businesses we exceeded this target by more than 7,000 items. Your love put food in the bellies of hungry adults and children.

But our supporters not only give from their pantries. You are also generous with your talents and time. This edition is also an opportunity for us to thank the many volunteers and parish communities who support Anglicare in a variety of ways.

Lastly, this edition helps launch our new three year Strategic Plan which will run until June 2018. Our plan acknowledges that it is only your generosity that enables us to meet the gaps that Governments will not fund. This reality is brought into focus in the last of our four strategic goals. A key part of this goal is to build community service hubs in partnership with the Anglican Church which will provide crisis and post-crisis support aimed at breaking the cycle of poverty.

This fourth goal also acknowledges that Anglicare is part of the Anglican Church and its broader mission. (We are owned by the Anglican Diocese of Canberra & Goulburn and operate in partnership with the Dioceses of Bathurst and Riverina). It is our core mission and identity.

In the well-known Bible story usually titled 'the Good Samaritan', Jesus tells the story of a man robbed and wounded by thieves left close to death beside a road. Upstanding members of society walk by, and for what seems to them like fair and justified reasons, they fail to help him. Rather it's a despised foreigner – a Samaritan – who finally saves the injured man.

In his parable, Jesus is trying to teach his followers how social and personal barriers can mean that we put self-interest ahead of helping people in need.

Our sense of hospitality should extend to all of humanity, even those we despise or fear. This is the essence of Christian compassion. As Anglicare's identity statement puts it: "we are called by Jesus' example to respond to human need by providing loving service" to all who need our support.

Yours Sincerely,

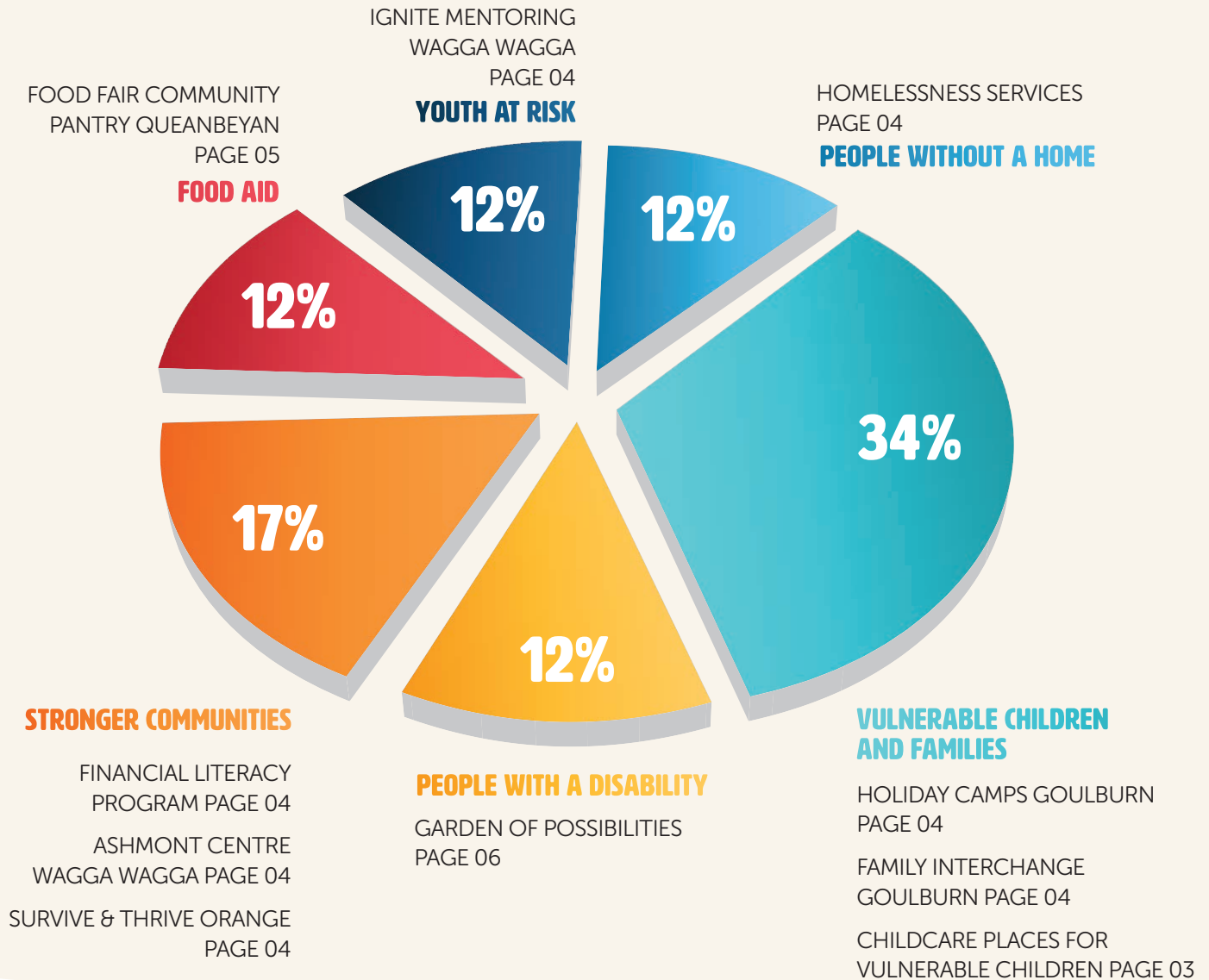
Jeremy Halcrow

Chief Executive Officer, Anglicare

YOUR GENEROSITY HAS MADE THIS POSSIBLE

It is with your help that we are able to implement new services and programs to fulfil the needs we see in our local communities every day. Here are some of the ways your donations have helped those in need over the past 12 months. Thank you for your ongoing support!

HOW WE SPENT YOUR DONATIONS 2014 / 2015



Children enjoying the outdoors at St Saviours Long Day Care Centre

VULNERABLE CHILDREN AND FAMILIES

Childcare places for vulnerable children

Over the past 12 months Anglicare has provided financial assistance by covering the cost of fees for vulnerable children in our community to attend our Early Learning Centres. Through this service 21 children have been able to attend, enabling their carers, usually single-parents, to work, study or attend appointments, when they would not have otherwise been able to afford childcare.

YOUR GENEROSITY HAS MADE THIS POSSIBLE

STRONGER COMMUNITIES

Financial Literacy Program

In this new program Anglicare staff and selected volunteers are trained to become budget counsellors. The program is an innovative way of providing financial literacy education to urban, rural and remote communities. The initiative aims to benefit existing clients including individuals accessing emergency relief, the NILS program, young people accessing Youth and Family Services and young adults in foster care.

Ashmont Centre

The Ashmont Community Resource Centre plays a crucial role in helping to link vulnerable families and individuals to the support services that meet their unique needs. Additional funding has enabled the centre to provide emergency relief to more than 100 families during winter.

VULNERABLE CHILDREN AND FAMILIES

Goulburn Holiday Camps

Over the last 12 months, we have had the opportunity to send 14 young people on holiday camps. These are incredibly valuable for youth who are in disadvantaged or vulnerable home situations, as it gives them the opportunity to take a break from their home-life and learn positive life skills. Camp visits are well loved and have made a significant impact on the lives of the young people we have been able to send.

Goulburn Family Interchange

Goulburn Family Interchange offers a much-needed respite service for carers of people with a disability. Our volunteer hosts include couples, families, single people or shared households, who provide occasional or regular quality care for children and adults with a disability, and provide opportunities for them to develop skills and increase their social contacts.

PEOPLE WITHOUT A HOME

Anglicare supports those in our local communities without a home through initiatives such as food aid, material aid and advocacy.

YOUTH AT RISK

Ignite Mentoring

Ignite Mentor provides life-changing mentoring support to young people in the Riverina. The community based initiative recruits local volunteer mentors and has recently trained more than 40 new people, including the Mayor of Wagga Wagga, Cr Rod Kendall, to be paired with mentees.



Anglicare staff at the official Survive and Thrive launch in Orange

HELP IS AT HAND FOR FAMILIES IN WESTERN NSW

Families in Orange now have access to a new community based child and family support service.

The Survive and Thrive program is a five year initiative and will provide a range of services including supported playgroups, therapeutic parenting programs, family counselling as well as services to assist families in crisis including advocacy, financial literacy and emergency relief.

A special baby and infant resource room has been established thanks to the generosity of donors. This will need to be continually stocked with items such as nappies, wipes and formula.

Anglicare Western Community Services Business Manager, Danielle Davis said the program would be life changing for many participants.

"We want to put a safety net between families and state intervention to prevent children being separated from parents and siblings," Mrs Davis said.

"A lot of families in the community are currently linked with Anglicare so it's great that we can now offer a new support program in a place they can feel comfortable visiting.

The program is funded by the Australian Government to assist families with children aged 12 years and under with a key focus on early intervention for children aged 0-5.

Families can approach Anglicare to take part in the program or they can be referred via other organisations such as NSW Police, NSW Health and community agencies.

YOUR GENEROSITY HAS MADE THIS POSSIBLE



Volunteer Chimi Rinzin at Anglicare's Food Fair



A selection of products available at Food Fair

FOOD FAIR HELPS EASE THE COST OF LIVING IN QUEANBEYAN

Anglicare has launched a new community pantry program in Queanbeyan to help support people on low incomes.

The service has been established due to an identified need in the community, thanks to the generosity of our donors and supporters.

Run from Anglicare's Bargain Hunter store, Food Fair is the first of its kind in the area and will offer groceries like pasta, cereal, toiletries and cleaning products to pension and Centrelink card holders at a subsidised price.

"We're trying to help people who are living week to week to stretch their dollar further," Retail and Community Engagement Manager, Kaye Pritchard said.

"People can sign up to become a member, costing \$2 for twelve months and then they can shop as they would in a supermarket."

Anglicare's Food Security Mapping research conducted in 2013 found 35 per cent of respondents from Queanbeyan had needed help with food and not been able to access it.

"Queanbeyan has pockets of disadvantage and we know that it's a solution for many people who can't afford to live in Canberra," Mrs Pritchard said.

"We know it's often nutrition that suffers when money is tight."

Food Fair will operate twice a week on Thursday and Friday between 10am-12pm and 1pm-3pm.

A small emergency relief operation will also run, handing out items donated from annual campaigns such as the Pantry Appeal.

HOW MUCH?



FOOD FAIR
\$11.40



SUPERMARKET
\$63.79

One basket of groceries at your local supermarket can lead to a surprising amount being deducted from your wallet. To discover the true value offered to clients, Food Fair Supervisor, Melanie Turner, decided to see just how much they are saving clients each visit. The results were astounding!

Melanie packed a basket at Food Fair with a range of items, covering breakfast, lunch and dinner - 20 items in total. Using Food Fair's cost structure, the basket was weighed at a \$1.50 per-kilo rate, coming in at \$11.40.

The same items were then bought at the supermarket, totalling a whopping \$63.79.

Food Fair clients can save over \$50 per visit, which over the duration of a year will make a big difference in their lives when every dollar counts.

UPCOMING DIARY DATES

OCTOBER 2015

5 October
Labour Day

11 - 17 October
Anti Poverty Week

NOVEMBER 2015

Toys, Teens & Tucker Appeal

25 November
International Day for the
Elimination of Violence
against Women

DECEMBER 2015

Toys, Teens & Tucker Appeal

3 December
International Day of Persons
with Disabilities

5 December
International Volunteer Day

www.anglicare.com.au

YOUR GENEROSITY HAS MADE THIS POSSIBLE

SPOTLIGHT



Daniel Penders shooting hoops at Holt



Josh Waugh - Anglicare volunteer

JOSH WAUGH – VOLUNTEER

Enthusiasm and a unique ability to explain to individuals how their donation can make a big difference is what sets Joshua Waugh apart – that and the fact that he has been volunteering for Anglicare since he was just nine years old. Josh is a Year 12 student at Canberra Grammar where he has supported Anglicare through coordinating the school's donations for Anglicare's annual Pantry Appeal, as well as organising a collection of winter coats to be distributed to those in need. Josh has also collected donations at Brumbies matches, sorted Christmas cards and is always looking for other ways he can make a difference.

Josh's tireless energy and a heart and spirit that shines with love for those less fortunate are the basis on which he has been nominated for an award at the Anglicare Australia National Conference in September. We wish Josh luck for this award and thank him for his support for those in need.

NEW GARDEN SPROUTS ENDLESS POSSIBILITIES

A communal outdoor area at the newly refurbished ACT Disability Services building at Holt is helping clients enhance their health and achieve greater independence.

The 'Garden of Possibilities' project will have a positive impact on clients, and has been possible because of the generosity our donors have shown.

After extensive planning and consultation, a concrete multi-purpose sports area with basketball hoop has been completed, raised garden beds are progressively being installed and a covered quiet retreat area and BBQ area are yet to be established.

Project Manager Clare Thomas said feedback from families indicated that they wanted the clients to be active and learn how to grow and care for vegetables and plants.

"We want the new garden to have positive impacts on the overall health and wellbeing of the clients, including physical activity, development of new skills and a better understanding of nutrition," she said.

Money was also used to purchase an adjustable kitchen bench that enables wheelchair bound clients to be involved in the existing cooking program that will use the fresh ingredients produced in the gardens.

To enhance community inclusion, discussions are being held with neighbouring and local community organisation about becoming involved in the gardening project.

Anglicare College RTO No. 88177

ANGLICARE NSW SOUTH, NSW WEST & ACT

Learn, Earn & Thrive Join Anglicare College today!

Anglicare College is a registered training organisation that provides nationally recognised, unique, industry-specific, educational programmes and services that benefit organisations and individuals within the Community Services Sector.

UPCOMING COURSES:

HLTAID003 Provide First Aid – ACT
Wednesday 14 October 2015
Thursday 15 October 2015

HLTAID003 Provide First Aid – PAMBULA
Saturday 7 November 2015

CHC30113 Certificate III in Early Childhood Education and Care – CANBERRA
Friday 16 October 2015
Friday 13 November 2015
Friday 11 December 2015

P: 02 6496 1251 | E: rto@anglicare.com.au
www.anglicare.com.au

ANGLICARE IS BUILDING STRONGER COMMUNITIES

OUR NEW STRATEGIC PLAN

Our new Strategic Plan has been released, and it reveals the direction that Anglicare will take in 2015-2018. It recognises that our strength and capacity to give hope to, and make a positive difference in the lives of people in need must be built on four pillars

- » Quality services making a positive impact on the lives of people in need
- » Financial Sustainability
- » Developing Our People
- » Our shared Christian Mission in partnership with Anglican churches

"Implementing our strategy over the next three year, we will focus on developing programs that foster people's full participation in society," said CEO Jeremy Halcrow.

"We will aim to provide care in a holistic context. This means that wherever appropriate our services will include material, relational and spiritual support."

Visit our website at www.anglicare.com.au to discover our vision, mission and strategic goals for the coming years.



Goulburn cathedral

ANGLICARE'S FOCUS ON MISSION AND COMMUNITY DEVELOPMENT

In the new strategic plan, the position of Mission and Community Development General Manager has been created. The Rev'd Ian Coutts has been appointed to this role. In this role he aims to engage with 110 churches from Eden to Broken Hill and is regularly in discussions with the Bishops of the Anglican Diocese of Canberra & Goulburn, Riverina and Bathurst. As an ordained Anglican minister, he is also a qualified social worker with particular experience in the fields of child protection and domestic violence. This knowledge puts him in a good position to oversee Anglicare's new contracts with the Department of Social Services that involve delivering child and parenting services in Orange and Wagga.

"This is a new area that crosses both the work of Anglicare and also some of our partner Anglican churches. It's a very exciting opportunity to develop closer links in order to help communities," he said.

Other partnership areas Rev'd Coutts is involved in includes St John's Care, Share the Benefit, emergency relief across Anglicare and church sites and disaster recovery. To increase parish partnership projects in the future, a new monthly e-newsletter has been launched in the Canberra & Goulburn Diocese called 'Church and Community Connections.'



Stuart Davis-Meehan



Pantry Appeal donations from St Stephens parish Kambah, ACT

CHURCHES AND COMMUNITY

WELCOME STUART DAVIS-MEEHAN

Anglicare is delighted to introduce the new Director of St John's Care, Stuart Davis-Meehan, who commenced the role on 27 July.

Stuart brings with him a wealth of experience and passion for working with the vulnerable including at risk young people, drug users, people from culturally and linguistically diverse backgrounds, people living with disabilities, Indigenous communities and people who are frail and aged.

"I really believe that St John's Care supports the most disadvantaged people in our community," he said.

"This is what really drew me to St John's Care."

Stuart was born in Newcastle where he lived with his family for over 30 years. Additional to his work alongside the disadvantaged, he and his wife have run a social research and strategic planning consultancy business, Key Insights, for more than two decades. He has also been an active volunteer and a board member.

Despite only a short time in the Director's role at St John's Care, Stuart has been overwhelmed by the public's support for the emergency relief Centre and the support from Anglicare as the partner organisation.

"The support we get from churches, organisations and the community is just fantastic. There are a lot of people out there who are very passionate about the work of St John's Care."

St John's Care is open from 9:30am to 2:00pm Monday to Friday in Canberra.

THANK YOU

TO OUR CHURCH & SCHOOL COMMUNITY

A big thank you to all the churches and schools who got involved in the Anglicare Pantry Appeal collections this year. Many of you volunteered on the shopping centre collection stands or ran your own shopping centre collections – thank you, we couldn't have done it without your help!

A number of you held collections at your church or school, and generously donated so many grocery items. Thank you – the items will go a long way in assisting those in our local communities who need a helping hand.

Anglicare enjoyed working with you to make a difference in our community and show the love of Jesus in a tangible way. Thank you for your contribution and support.

HELPED FEED
1480 FAMILIES



TOTALED
47,373 ITEMS



18,368 ITEMS
DONATED BY CHURCHES
& SCHOOLS



**ANGLICARE
PANTRY
APPEAL**

Thank you again to our generous donors for making these wonderful projects happen. If you haven't donated, or would like to make a further contribution, and wish to help us achieve more this year, your donation would be appreciated.

ANGLICARE

1. Please complete this form
2. Enclose this form / cheque in an envelope and post to us at PO Box 147, Kippax, ACT 2615

Name:

Address:

Phone:

Email:

Donate here or on www.anglicare.com.au

Please accept my donation of:

\$50 \$20 \$100 \$200 \$.....

Please debit my: Mastercard Visa

□□□□ □□□□ □□□□ □□□□

Signature..... Expires...../.....

Name on Card.....CCV:.....

My cheque/money order is enclosed (made payable to Anglicare Canberra & Goulburn)

Thank you for your generosity. A receipt will be sent to you shortly. Donations over \$2.00 are tax-deductable

Thrive Spring 2015

PHONE
1800 18 77 68

EMAIL
Donations@anglicare.com.au

MAIL
PO BOX 147
Kippax ACT 2615

WEBSITE
www.anglicare.com.au

I would like to sign-up to receive THRIVE Newsletters via email - address as per above via post - address as per above