



WOLLONDILLY GARDENS

GOULBURN • NSW

GORGEOUS VILLA 76 AVAILABLE NOW!

FEATURES:

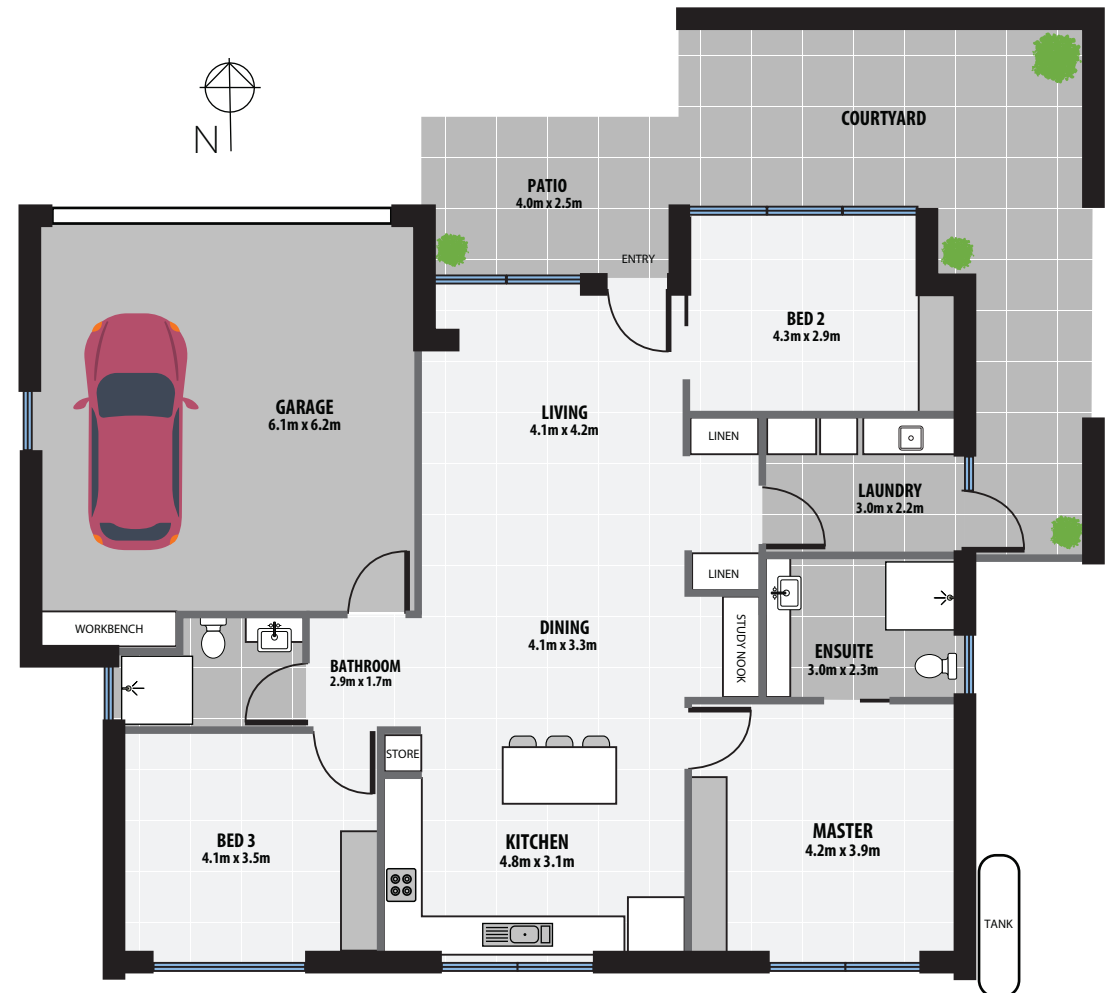
- No Stamp Duty Payable
- Leading edge of adaptability and accessibility design!
- Gorgeous open plan living area
- Three bedrooms, two bathrooms
- North facing, solar passive
- Double glazed windows
- Reverse cycle air conditioning
- North facing private courtyard
- Generous double garage
- Wonderful natural light
- Dimensions: 173.5m²
- Almost brand new, completed in late 2019!

Please phone Suzy on
0447 618 789

to make a time to view
this beautiful home!

Area Measurement

Measurements and layout are based on original blueprints, some renovations may have changed these. All areas have been rounded to the nearest 100mm. All dimensions are estimated to be within 100mm. Any dimensions and areas shown are indicative only and may be varied subject to detail design and authorities requirements.



10 Mary Martin Drive Goulburn NSW 2580

www.anglicare.com.au/retirement-living